

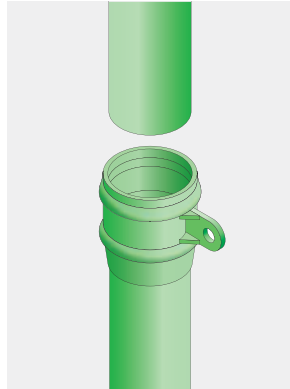
Installation - Aluminium Rainwater Pipe Preparation

Alumasc offer three rainwater pipe systems according to the architectural style of the eaves gutters. Heritage pipes are traditional in character, Flushjoint pipes offer clean lines and discreet jointing whilst Guardian pipes are designed for security conscious environments. Assembly and installation of each pipe system must be considered individually although general aspects of preparation are common to all.

Tools Required

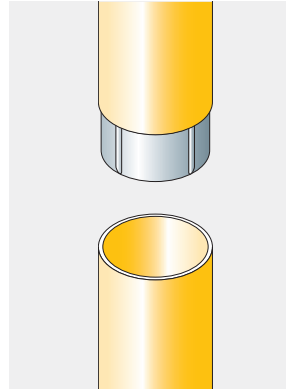
- String or plumb line
- Tape measure
- Drill
- File
- Masonry bit
- Wall Fixing (e.g raw plug)
- Cleaning rags
- Marker pen
- Solvent cleaner
- Posi and Plain screwdriver
- Paintbrush
- Hacksaw
- Masking tape
- Mastic gun
- Spirit level
- Protective gloves
- Adjustable spanner

Heritage Pipe



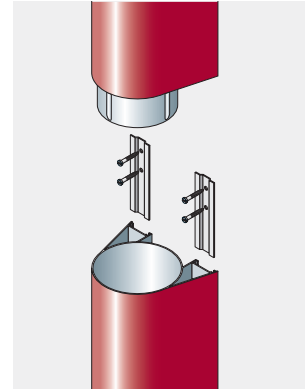
Eared pipe sockets and fittings (uneared socket available)

Flushjoint Pipe



Internal pipe spigots with bracket fixings

Guardian Pipe



Flush to wall pipe with hidden fixings

General Installation Sequence

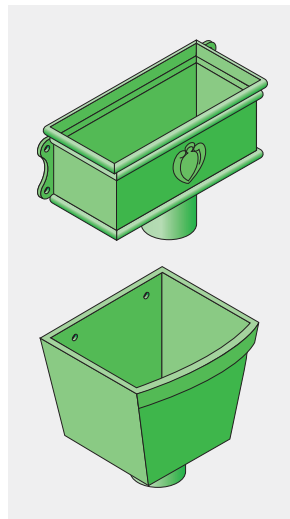
- Complete installation of gutters
 - Position offsets, bends and branches
 - Fit pipes and brackets
 - Fit plinth offsets
 - Fit access doors and shoes
- (see pages 89 to 91 for details)

Sealant

For durable all weather seals and best results, Alumasc recommend the use of DOW 791 silicone sealant.

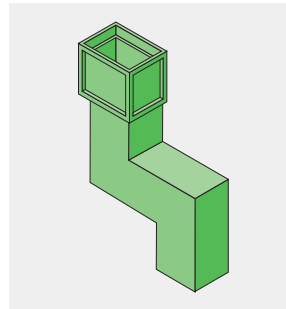
Rainwater Heads

Fixing to masonry through external lugs or preformed holes in back.



Bespoke Fabrication

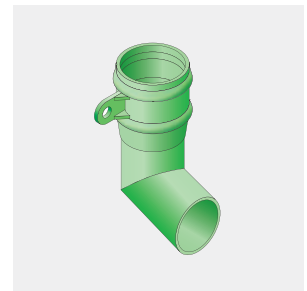
Where special conditions or tricky detailing is required, Alumasc have the equipment and skills to cast, cut, fold and weld aluminium into special configurations.



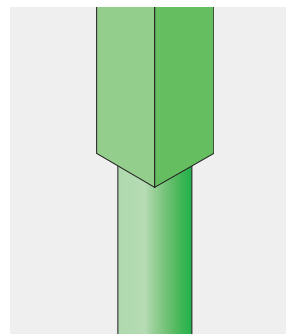
Special offset

Rainwater Shoes and Access Doors

A rainwater shoe is used when pipes discharge onto an open gully. An access door is fitted where the connection is direct.



Shoe



Pipe size changes



Access door